

# Western Christian Alumni Newsletter

# INFORM



## FALL NEWS 2009

### CLAREMONT CAMPUS

District Offices  
Preschool  
Early Kindergarten  
K – 8th  
International  
Private Satellite Program  
Tel: 909.624.8291  
3105 Padua Avenue  
Claremont, CA 91711

### UPLAND CAMPUS

Early Kindergarten  
High School  
International  
Private Satellite Program  
Tel: 909.920.5858  
100 West 9th Street  
Upland, CA 91786

## From The Superintendent

Dear Western Christian Families,

What an amazing year of celebration we've had. We just completed our Grand Opening Celebration of our move to our new high school campus in Upland. It has been a long anticipated move to Upland, but much shorter than the 40 years Moses and the Israelites spent in the wilderness; shorter than Noah building the ark, and shorter than the years the Israelites spent in Egypt! So, in perspective, it has been just one short year....overflowing with God's goodness, grace, and blessing!

When considering these and many other Biblical examples of pursuing God's promises, we have united the communities of Upland and Western to rest in a permanent home for our students. This facility also allows us the opportunity to expand our high school and our Upland preschool (currently Eagle's Nest).

We commemorate this time to praise God for His faithfulness. God has been faithful to Western Christian for 89 years, and we trust Him fully for our future as we prepare now to move into other Western long standing traditions, which include Homecoming and our annual Legacy Dinner. You won't want to miss our first ever night-time Homecoming Game Friday, October 16th, played on our own home field at Covina (Home games are played at Covina, while our field in Upland is being renovated, including upgraded lighting). Join in on some real alumni action by attending the Legacy dinner where you'll find alumni, students, faculty, parents, as well as a great meal, and loads of memories. Plus, it is a great event for your alma mater. Go Lancers!

We would like to thank you for your prayer and support in promoting Western as your school of choice; as over 3800 alumni have done for almost 89 years, preschool through high school.

The most important thing that we can do is to bless the name of Jesus Christ and boldly announce His faithfulness to our school and alma mater. See you at Homecoming and Legacy.

Partners Together for His Purpose,  
Karen Winter



# BACK TO OUR ROOTS!

The history of Western Christian reflects a rich heritage of those who have gone before us who were so committed to Christian education; they made sure it was provided to young people, even without a permanent home. The Western Christian forefathers exemplified determination, passion, flexibility and commitment to Christian education.

For the first forty plus years, Western Christian's home was in Upland. From 1920 to 1935 the school was located on the corner of Third Ave. and F Street, which was also the location of the Upland Brethren in Christ Church where our founder, Christian Charles Burkholder, was pastor. During the first fifteen years the high school enrollment averaged 37, and the college enrollment averaged 15.

In 1935 the school

moved to the corner of Arrow Highway and San Antonio, which had served as the original San Antonio Hospital. Enrollment grew slightly after this move, but increased significantly in 1946, after the close of World War II. The school's name changed during this time from Beulah College and Academy to Upland College and Academy.

The early sixties brought change to the school system. In 1963 the high school division moved from the college campus site in Upland, as both programs sought to build their own identities and grow enrollment.

On June 9, 1963, the LA Times printed an article introducing the new name under which the former Upland Academy would

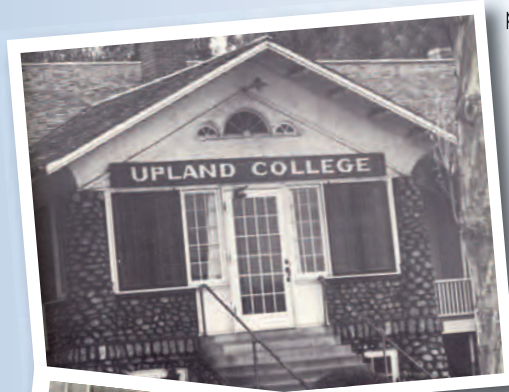
now operate. The new name of Western Christian High School, and its new location at a church in Pomona was announced. Up until 1963, the high school division was always housed with the college division.

In 1965 the college division of the school was closed due to low enrollment. The property in Upland was sold to pay off the college debts.

During the late sixties and seventies, the high school enrollment grew, which necessitated additional moves. Since 1963, Western Christian High School moved to Pomona, La Verne, Glendora and Covina. During these years enrollment and programs have grown. We now have a thriving preschool, elementary and middle school in Claremont, a successful homeschool program, over 1500 students in our school system, thousands of alumni, and dedicated constituents. We are humbled and honored to serve in a ministry that has such a rich history in this community.

It is important to note that the high school has not had a permanent, owned campus facility until today, where we find ourselves back in Upland, where we began in 1920, which is why today is such a significant celebration in the history of

Western Christian. We praise God for His faithfulness through the years and we celebrate today.



# Your Very Special Invitation...

## WESTERN CHRISTIAN SCHOOLS

REQUESTS THE PLEASURE OF YOUR  
COMPANY AT OUR ANNUAL

# Legacy

CELEBRATION DINNER

SATURDAY, NOVEMBER 14<sup>TH</sup>, 2009  
6:00 PM - 8:30 PM

### AZUSA PACIFIC UNIVERSITY

UPPER TURNER CAMPUS CENTER  
901 EAST ALOSTA AVENUE  
AZUSA, CA 91702

SPONSORSHIP OPPORTUNITIES LIST IS ON OPPOSITE SIDE.  
ALL LEGACY PROCEEDS WILL BENEFIT  
PRESCHOOL, ELEMENTARY, MIDDLE SCHOOL & HIGH SCHOOL.

PLEASE R.S.V.P. BY OCTOBER 23<sup>RD</sup>, 2009  
TO: CARISSA SAUGSTAD • PHONE: (909) 624-8291 EXT. 233  
E-MAIL: [csaugstad@westernchristian.org](mailto:csaugstad@westernchristian.org)

## SPONSORSHIP OPPORTUNITIES



### Founder's Club

#### Champion Sponsor \$25,000

Banner recognition at the event  
Commemorative plaque  
Commemorative brick  
Founder's Club Pin  
Two (2) Western Logo Polo Shirts  
Newsletter recognition  
Placement of name on event webpage  
One (1) table for 8 with prime seating and recognition

#### Platinum Sponsor \$15,000

Banner recognition at the event  
Commemorative plaque  
Commemorative brick  
Founder's Club Pin  
Two (2) Western Logo Polo Shirts  
Newsletter recognition  
Placement of name on event webpage  
One (1) table for 8 with prime seating and recognition

#### Gold Sponsor \$10,000

Banner recognition at the event  
Commemorative plaque  
Commemorative brick  
Founder's Club Pin  
Newsletter recognition  
Placement of name on event webpage  
One (1) table for 8 with prime seating and recognition

#### Silver Sponsor \$7,500

Banner recognition at the event  
Commemorative plaque  
Founder's Club Pin  
Newsletter recognition  
Placement of name on event webpage  
One (1) table for 8 with prime seating and recognition

#### Bronze Sponsor \$5,000

Banner recognition at the event  
Founder's Club Pin  
Newsletter recognition  
Placement of name on event webpage  
One (1) table for 8 with prime seating and recognition

#### 1920 Founder's Club \$1,920

Founder's Club Pin  
Newsletter recognition  
Placement of name on event webpage  
One (1) table for 8 and recognition

#### Emerald Sponsor \$1,500

Newsletter recognition  
Placement of name on event web page  
One (1) table for 8 and recognition

#### Ruby Sponsor \$1,000

Newsletter recognition  
Placement of name on event web page  
One (1) table for 8 and recognition

#### Sapphire Sponsor \$500

Newsletter recognition  
Placement of name on event web page  
Table recognition at the event

INDIVIDUAL TICKET \$25  
A FULL TABLE SEATS 8 PEOPLE

ANY QUESTIONS PLEASE CONTACT  
CARISSA SAUGSTAD • PHONE: (909) 624-8291 EXT. 233  
EMAIL: [csaugstad@westernchristian.org](mailto:csaugstad@westernchristian.org)  
[www.westernchristian.org](http://www.westernchristian.org)

## Funded Legacy Improvements

- New Computers for Computer Labs
- New Computer Projectors for K-8 and H.S. Classrooms
- High School Lockers
- Resurfacing of the High School Basketball Court
- New Classroom and Office Furniture for Both Campuses
- Claremont Playground Upgrades and Remodel
- Softball Backstop Area
- Maintenance Department Truck
- Part-Time Nurse
- New Paint for Busses
- 4 Vans
- Fine Arts Curriculum
- Spanish Curriculum
- Foreign Language Curriculum
- Library Media Centers
- Implementation of K-12 Student Management Software
- Faculty Christmas Bonus
- Smart Boards
- Science Labs
- Band Instruments

## Help Keep Western's Legacy Going...

Some of our needs are:

- Scholarships (K-12)
- Sports Programs
- Fine Arts Programs
- Facilities Enhancements
- Extra Curricular Programs
- Equipment and Resources
- Preschool Playground Equipment & Fencing
- Football Field (Upland)
- Gym Wood Floor (Upland)
- Landscaping Upgrades (all school)
- Library/Media Expansion
- Technology Expansion
- Claremont Campus Security Fencing

## WESTERN'S LEGACY ANNUAL FUND PLAN

2 Families	\$25,000	\$2,500 per month	\$50,000
5 Families	\$15,000	\$1,500 per month	\$75,000
10 Families	\$10,000	\$1,000 per month	\$100,000
20 Families	\$5,000	\$500 per month	\$100,000
30 Families	\$2,500	\$250 per month	\$75,000
60 Families	\$1,500	\$150 per month	\$90,000
60 Families	\$1,000	\$100 per month	\$60,000
75 Families	\$750	\$75 per month	\$56,250
150 Families	\$500	\$50 per month	\$75,000
200 Families	\$250	\$25 per month	\$50,000



# WESTERN ALUMNI!

## FIGHTING LANCERS

WESTERN CHRISTIAN HIGH SCHOOL

Come to the 2009 Homecoming Game  
vs. Arrowhead Christian  
Friday, October 16, 2009  
Covina Campus at 7:00pm

### WESTERN CHRISTIAN SCHOOLS HOSTED A GRAND OPENING CELEBRATION

On September 17th at our new Upland campus we welcomed parents, teachers, students, faculty, Board members, pastors, community, and city and county officials. It was an eventful and grand day that will be remembered and set in WCS' history.



"Brothers, I do not consider myself yet to have taken hold of it. But one thing I do: Forgetting what is behind and straining toward what is ahead, I press on toward the goal to win the prize for which God has called me heavenward in Christ Jesus."

—Philippians 3:13-14

# 97% of 2009 Western Christian Graduates Accepted into the College of Their Choice

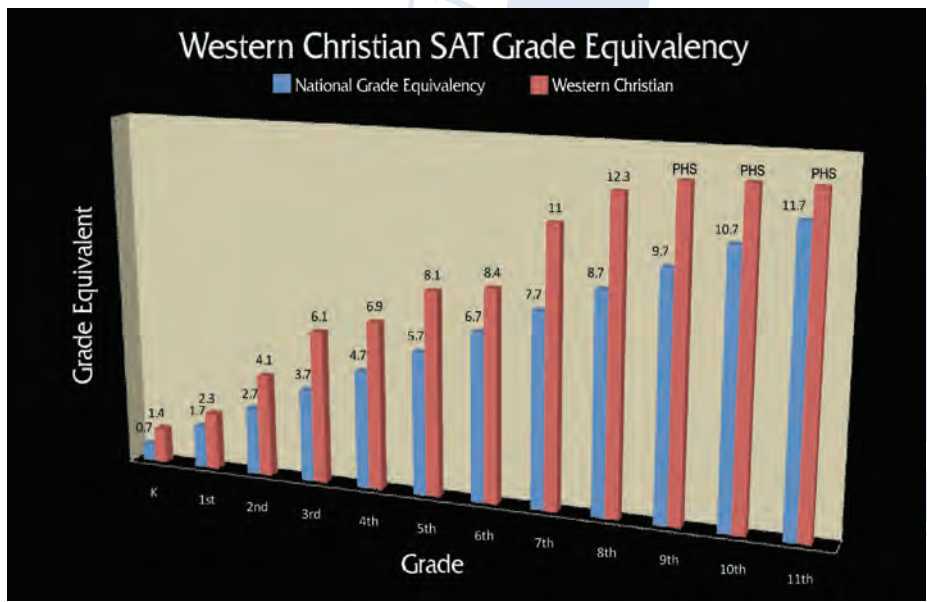
## College and University Acceptances

Academy of Art College  
 American University of Sharjah  
 Azusa Pacific University  
 Baylor University  
 Biola University  
 Boston University  
 Cal Baptist University  
 Cal Poly Pomona  
 Cal State Fullerton  
 Cal State L.A.  
 CSU Monterey Bay  
 Cal State University Northridge  
 Cal State San Bernardino  
 Cal State University San Marcos  
 Chaffey College  
 Chico State  
 Citrus College  
 Clemson University  
 Columbia Film School Hollywood  
 Concordia University  
 Diablo Valley College  
 East Los Angeles College  
 Fordham University  
 Fresno State  
 Fullerton College  
 Houston Baptist University  
 Kirkwood College  
 Lee University  
 Lehigh University  
 Loyola Marymount University  
 Michigan State University  
 Molloy College  
 Mt. SAC  
 Mt. SAC Firemens Academy  
 Mt. Saint Mary's University  
 Neosho College  
 North Carolina State University  
 Northern Arizona University  
 Northwest Christian College  
 Northwest Missouri State  
 Occidental University  
 Ohio State University  
 Pasadena City College  
 Pensacola Christian College

Pennsylvania State University  
 Pepperdine University  
 Point Loma Nazarene University  
 Purdue University  
 Oak Valley College  
 Sacramento State University  
 Saddleback College  
 Saint Louise University  
 St. John's University  
 San Bernardino State University  
 San Diego State University  
 Santa Monica College  
 Savannah College of Art & Design  
 Seattle Pacific University  
 Stony Brook University  
 Texas A&M  
 Texas Wesleyan University  
 Trinity Christian College  
 UC Berkley  
 UC Davis  
 UCLA  
 UC Irvine  
 UC Riverside  
 UC San Diego  
 UC Santa Barbara  
 University of Connecticut  
 University of New Mexico  
 University of Hawai'i  
 University of Hawai'i at Manoa  
 University of Illinois-Urbana Champaign  
 University of Iowa  
 University of La Verne  
 University of Kansas  
 University of Maryland  
 University of Miami  
 University of North Texas  
 University of San Francisco  
 USC  
 University of Toledo  
 University of Washington, Seattle  
 Vanguard University  
 Westmont College  
 West Virginia University  
 Whittier College



*"I feel like I am well prepared for college. The dedicated teachers provided a better learning atmosphere to the school's hard-working students and I love the close community environment."*  
 - Dana Cox, WCHS Graduate, Class of '09



Western Students Score Up To 4 Years Above National Norms



*A Legacy of Excellence Since 1920*

District Offices  
3105 Padua Avenue  
Claremont, CA 91711

Non-Profit Org.  
U.S. Postage  
**PAID**  
Permit No. 1  
Glendora, CA



- **SAVE THE DATE!**
- **R.S.V.P. AND**
- **LOOK FORWARD TO ATTENDING!**

**SEE INSIDE**

For More Information  
and Your Invitation!

